


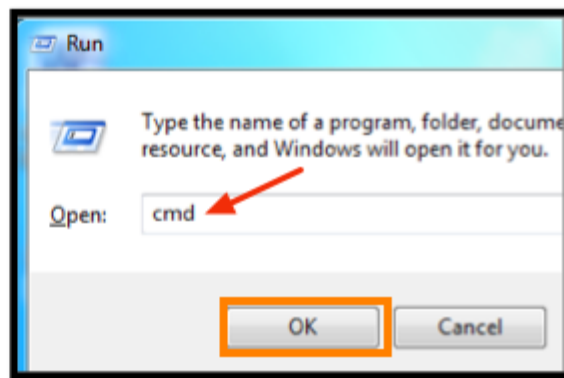
Bring Your Own Device BYOD Wi-Fi Windows Computers

- District employees can register up to three (3) personal devices to use the district's BYOD network.
- You must be on a computer or device that has Internet access and is using the district's network to reach the registration site in Step 2.
- The examples in this tutorial illustrate a Windows computer.

In order to register your computer for access to the FNSBSD-BYOD network, you must know your computer's Wi-Fi or Media Access Control (MAC) address. There are two basic ways to determine the MAC address on a Windows computer.

With or Without an Internet Connection (Windows Vista Example)

Windows logo key  +R >



In the command window, type in **ipconfig /all** (note the space between ipconfig and the forward slash) after your f-number or login username:

```
C:\Windows\system32\cmd.exe
Microsoft Windows [Version 6.1.7601]
Copyright (c) 2009 Microsoft Corporation. All rights reserved.

C:\Users\skype>ipconfig /all

Windows IP Configuration

Host Name . . . . . : munis-c01-106
Primary Dns Suffix . . . . . : fsd.domain
Node Type . . . . . : Hybrid
IP Routing Enabled. . . . . : No
WINS Proxy Enabled. . . . . : No
DNS Suffix Search List. . . . . : fsd.domain

Wireless LAN adapter Wireless Network Connection 2:

Media State . . . . . : Media disconnected
Connection-specific DNS Suffix . . . . . :
Description . . . . . : Microsoft Virtual WiFi Miniport Adapter
Physical Address. . . . . : 1C-65-9D-E9-0B-EF
DHCP Enabled. . . . . : Yes
Autoconfiguration Enabled . . . . . : Yes

Ethernet adapter Bluetooth Network Connection:

Media State . . . . . : Media disconnected
Connection-specific DNS Suffix . . . . . :
Description . . . . . : Bluetooth Device (Pers
Physical Address. . . . . : C0-CB-38-CB-9F-00
DHCP Enabled. . . . . : Yes

Wireless LAN adapter Wireless Network Connection:
Connection-specific DNS Suffix . . . . . : fsd.domain
Description . . . . . : DW1501 Wireless-N WLAN Half-Mini Card
Physical Address. . . . . : 1C-65-9D-E9-0B-EF
DHCP Enabled. . . . . : Yes
```

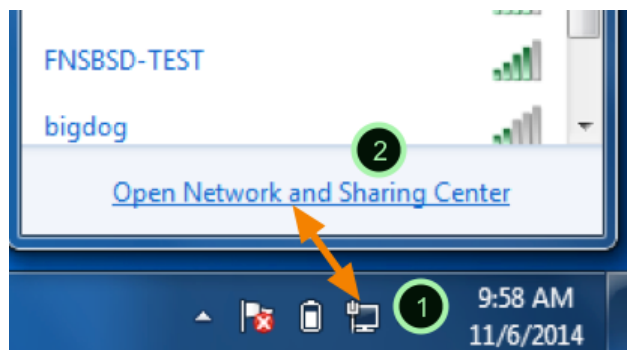
Wi-Fi
address

Many different IP configs will display -- be sure to look for **Physical Address** for the **Wireless Network Connection**.

With Internet Connectivity

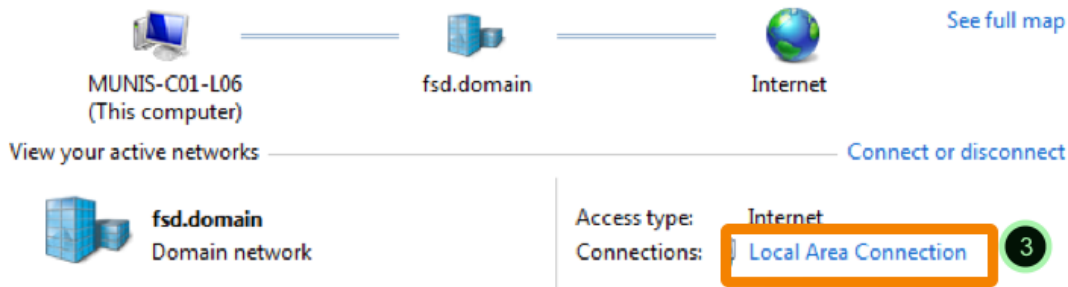
When you are connected to the Internet via Ethernet cable or wireless network, the Wi-Fi address (referred to as the Physical Address in Windows) can be located as follows:

1. From the Task Bar, click on the computer icon (shown) or the wireless signal strength icon (depending on how the device is accessing the Internet).
2. Click on the link to **Open Network and Sharing Center**.



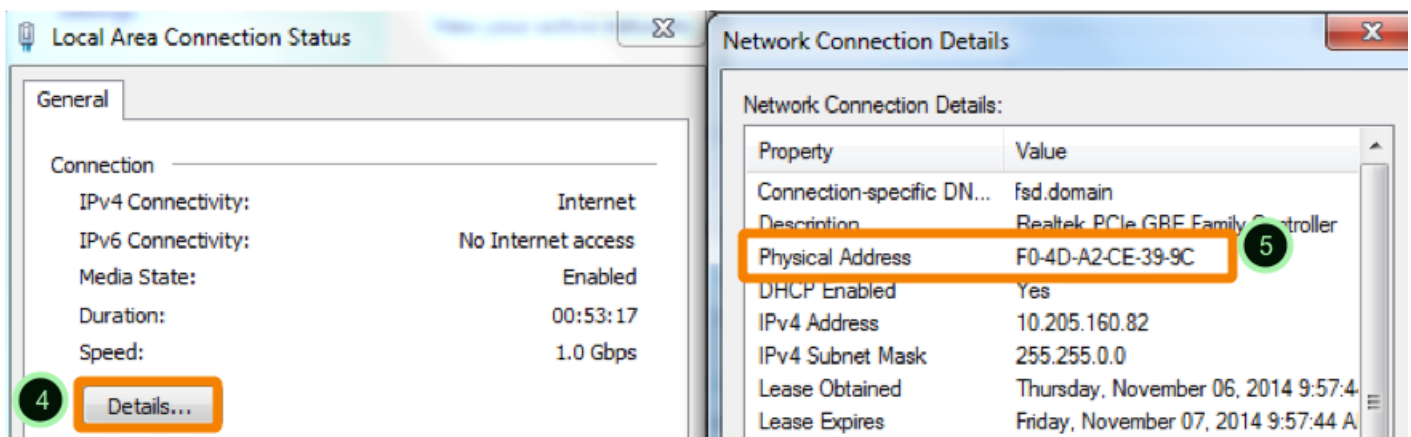
3. Click on the connection type.

View your basic network information and set up connections



4. Click on **Details**.

The Physical Address displayed on the resulting pane is the Wi-Fi address.



Navigate to the FNSBSD My Devices Portal (you must be on the district's network)

Navigate to mydevices.k12northstar.org using Safari, Internet Explorer, Chrome, or Firefox on any mobile device or computer with FNSBSD network Internet connectivity. You might want to use a computer at your district work location that is already connected to the district's network. You can use your personal computer if you are at a district building and have an Ethernet cable to connect to the district network.

Eight steps to add your device:

Sign On
Welcome to the FNSBSD BYOD registration page.

Username: f12345678

Password:

[Please read the terms and conditions.](#)

Sign On

Manage Devices

Welcome to the My Devices Portal, where you can manage your own devices.

Number of registered devices: 1/3

Refresh

Add

Manage Devices (1)

Filter items...

iPhone 4S

56:H4:90:11:BN:0R

Pending

Add Device

To add a device, enter the Device ID (WiFi Address) and a description (optional); then click submit to add the device. After this has been done successfully you may now connect to FNSBSD-BYOD with a password of PersonalDevice

Device name: *

iPad 4

Note the BYOD network Password

Wifi Address: *

56:UK:90:24:BN:YT

Enter your device's Wi-Fi Address (a.k.a., MAC Address or Physical Address)

Description:

Submit

Cancel

Edit or Delete a Device

Once the device has been submitted, the edit button can be used to change the description only. If an error was made while entering the Wi-Fi address, the Device ID must be deleted and re-registered.

Number of registered devices:1/3

Refresh

Add

Manage Devices (1)

Filter items...

iPhone 4S

88:53:95:CC:40:DB

Click on device info to begin

ing



Manage Device

Select an operation you would like to perform on your device.

Device status: Pending
Device name:
Device ID: 88:53:95:CC:40:DB
Description:

Select an option:

Lost?

Stolen

Edit

Delete

Close

Connect to the FNSBSD-BYOD

Once you have registered your PC's Wi-Fi address, you still need to connect to the BYOD network. Click on the Wi-Fi icon on the task bar. Click on the **FNSBSD-BYOD** Network. When prompted, enter the password for the BYOD network: **PersonalDevice**

Beyond iBoss

The BYOD network will initially deny access to many sites.


To get beyond the iBoss page, click the button to **Log in as a Different User**. On the resulting pop-up, enter your f-number for username and then your usual password.

iBoss
Web Filters

Page Blocked

Access to the requested site has been restricted due to its contents.

URL/Content: facebook.com/
Description: Website contains prohibited Friendship content.
Group Number: 1
Ip Address: 10.100.7.240



Login as different user

Internet Access Window

Username:

Password:

Server:

Login

Powered By:
iBoss
Enterprise 14500

© www.iBossWebFilters.com

