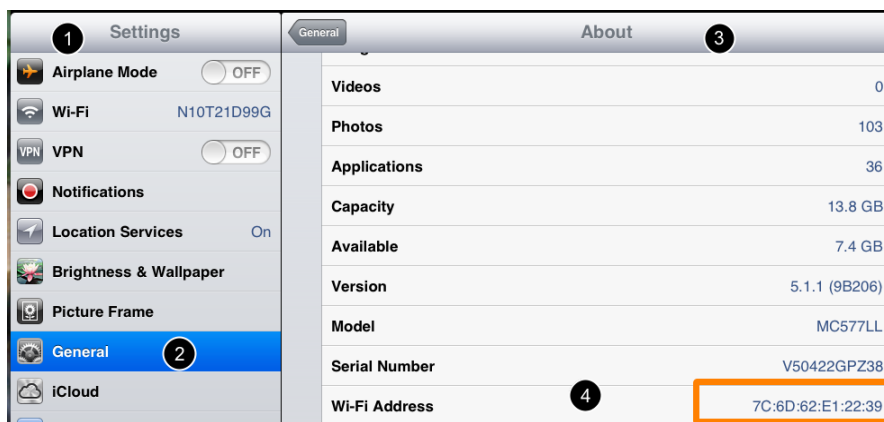


## Bring Your Own Device BYOD Wi-Fi Mobile Devices and Mac Laptops

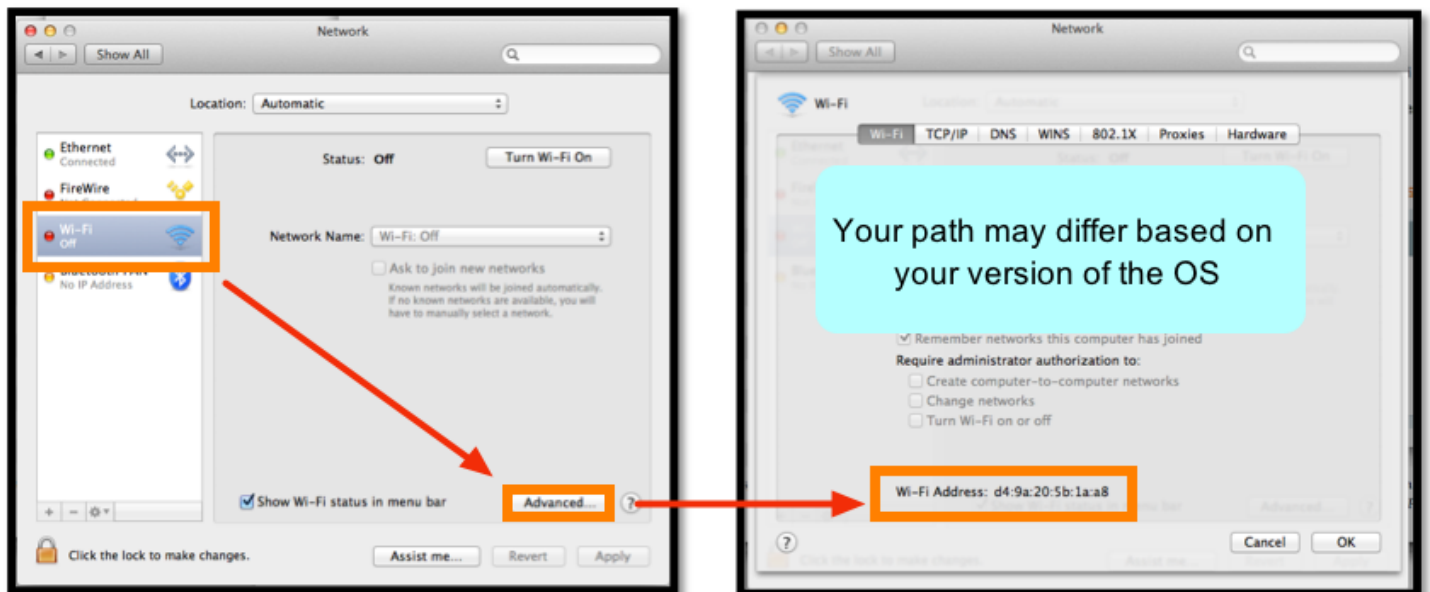
- District employees can register up to three personal devices to use the district's BYOD network.
- You must be on a computer or device that has Internet access and is using the district's network to reach the registration site in Step 2.
- The examples in this tutorial demonstrate a G4 iPad; however, the same basic process applies to other iDevices, Android, and Windows devices.

### Find your device's Wi-Fi Address

For example, on an iPad, you can find the Wi-Fi address along this path: **Settings > General > About > Wi-Fi Address**



### On a Mac Laptop: System Preferences > Network > Wi-Fi > Advanced



## Navigate to the FNSBSD My Devices Portal (you must be on the district's network)

Navigate to [mydevices.k12northstar.org](http://mydevices.k12northstar.org) using Safari, Chrome, or Firefox on any mobile device or computer with FNSBSD network Internet connectivity. You might want to use a computer at your district work location that is already connected to the district's network. You can use your personal computer if you are at a district building and have an Ethernet cable to link with the district network.

## Eight steps to add your device:

The screenshot shows the 'Sign On' page of the mydevices.k12northstar.org portal. At the top left is the Cisco logo. A callout '1' points to the URL 'mydevices.k12northstar.org'. Below the header, the text reads 'Sign On' and 'Welcome to the FNSBSD BYOD registration page.' There are two input fields: 'Username:' with the value 'f12345678' and a callout '2' pointing to it, and 'Password:' with a masked password and a callout '3' pointing to it. A callout box on the right contains the text: 'Input your f-number and your usual password; click the Sign On button.' Below the password field is a link 'Please read the terms and conditions.' and a callout '4' pointing to the 'Sign On' button.

### Manage Devices

Welcome to the My Devices Portal, where you can manage your own devices.

Number of registered devices:1/3

Refresh

Add

5

#### Manage Devices (1)

Filter items...

iPhone 4S

56:H4:90:11:BN:0R

Pending



### Add Device

To add a device, enter the Device ID (WiFi Address) and a description (optional); then click submit to add the device. After this has been done successfully you may now connect to FNSBSD-BYOD with a password of PersonalDevice

Device name: \*

6 iPad 4

Wifi Address: \*

7 56:UK:90:24:BN:YT

Description:

8 **Submit** Cancel

Note the BYOD network Password

Enter your device's Wi-Fi Address (a.k.a., MAC Address or Physical Address)

### Edit or Delete a Device

Once the device has been submitted, the edit button can be used to change the description only. If an error was made while entering the Wi-Fi address, the Device ID must be deleted and re-registered.

Number of registered devices:1/3

**Refresh** **Add**

#### Manage Devices (1)

Filter items...

iPhone 4S  
88:53:95:CC:40:DB  
Click on device info to begin **ing** >

#### Manage Device

Select an operation you would like to perform on your device.

Select an option:

Device status:	Pending
Device name:	
Device ID:	88:53:95:CC:40:DB
Description:	

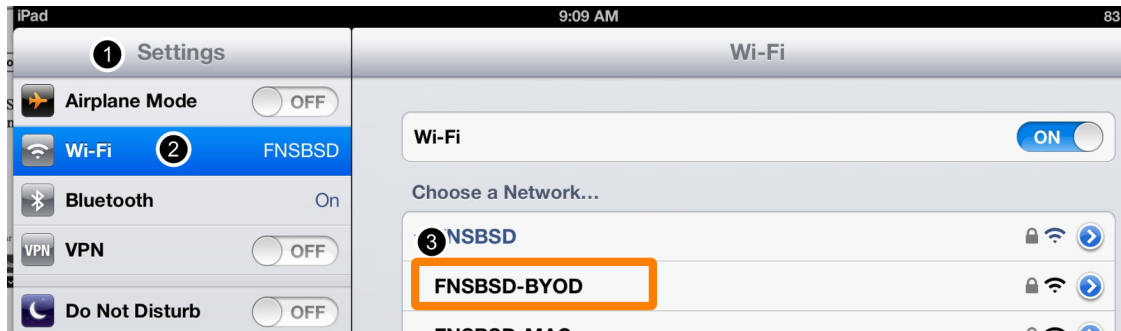
**Lost?** **Stolen**

**Edit** **Delete**

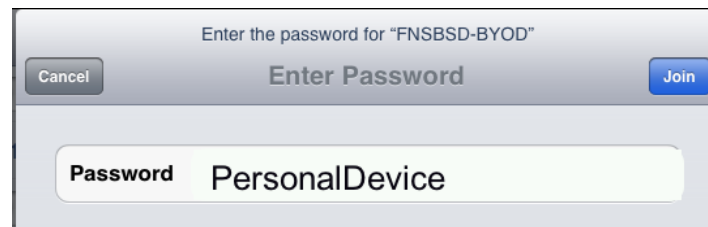
**Close**

## Access the BYOD network on your mobile device (G4 iPad pictured)

Follow a path similar to this to connect your registered device to the BYOD network:  
**Settings > Wi-Fi > FNSBSD-BYOD**



Enter the BYOD Password: **PersonalDevice**, then click **Join**.



## BYOD On A Computer

Once you have registered your device's MAC address, you still need to connect to the BYOD network.

Click on the Wi-Fi icon on the menu bar (mac) or task bar (PC).

Click on the **FNSBSD-BYOD** Network.

When prompted, enter the password for the BYOD network: **PersonalDevice**

## Beyond iBoss

The BYOD network will initially deny access to many sites.


To get beyond the iBoss page, click the button to **Log in as a Different User**. On the resulting pop-up, enter your f-number for username and then your usual password.

**iBoss**  
Web Filters

### Page Blocked

Access to the requested site has been restricted due to its contents.

URL/Content: facebook.com/  
Description: Website contains prohibited Friendship content.  
Group Number: 1  
Ip Address: 10.100.7.240



Login as different user

### Internet Access Window

Username:

Password:

Server:

Login

Powered By:  
**iBoss**  
Enterprise 14500

© www.iBossWebFilters.com