

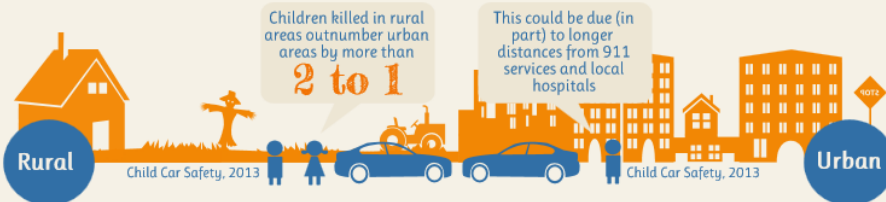
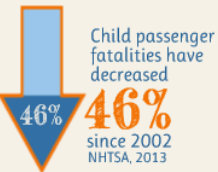
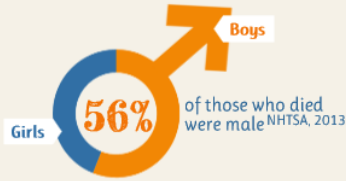
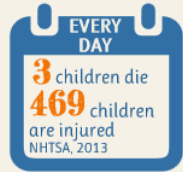
# PRECIOUS CARGO

## CHILD PASSENGER SAFETY

Motor vehicle-related injuries are a leading cause of death for children\* CSN, 2013

In 2011:

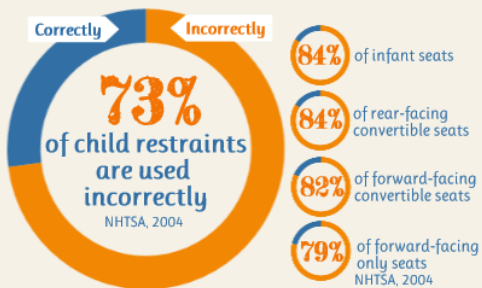
**1,130** children died  
**171,000** children were injured  
NHTSA, 2013



**274** toddlers\* and infants\* died | **1 out of 3** were totally unrestrained  
NHTSA, 2013

**263** toddlers & infants were saved by restraints | **51** more lives could have been saved if every child was in a child safety seat  
NHTSA, 2013

### THE BAD NEWS



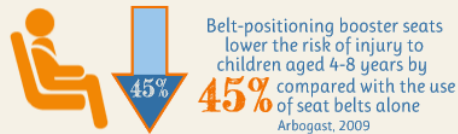
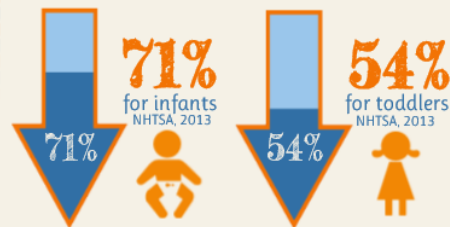
**1 out of 5** booster-age children are unrestrained  
NHTSA, 2010



When drivers DIDN'T wear their seat belts  
**63%** of infants and toddlers were also unrestrained  
NHTSA, 2008

### THE GOOD NEWS

Child safety seats can reduce fatalities by



When drivers DID wear their seat belts  
**75%** of infants and toddlers were properly restrained  
NHTSA, 2008



\*Children are defined as ≤14, toddlers are defined as between the ages of 1-4, and infants are defined as <1 year, unless otherwise specified

For detailed sources: <http://www.childrensafetynetwork.org/publications/child-passenger-safety-infographic>  
For prevention strategies & resources: <http://www.childrensafetynetwork.org/publications/child-passenger-safety-resource-guide>  
To find a car seat inspection station near you: <http://www.nhtsa.gov/cps/cpsfitting/index.cfm>

## PRECIOUS CARGO: CHILD PASSENGER SAFETY

---

**Motor vehicle-related injuries are a leading cause of death for children\*** (Children's Safety Network (CSN), 2013)

IN 2011:

1,130 children died and 171,000 were injured in motor vehicle crashes. Every day, 3 children die and 469 children are injured (National Highway Traffic Safety Administration (NHTSA), 2013)

56% of those who died were male (National Highway Traffic Safety Administration (NHTSA), 2013)

Child passenger fatalities have decreased 46% since 2002 (National Highway Traffic Safety Administration (NHTSA), 2013)

---

**Rural/Urban:** Children killed in rural areas outnumber urban areas by more than 2 to 1. This could be due (in part) to longer distances from 911 services and local hospitals (Child Car Safety and National Highway Traffic Safety Administration (NHTSA), 2013)

**Weekends are particularly dangerous.** 44% of fatalities occurred during the weekend; a third of all injuries occurred during the weekend (Child Car Safety and National Highway Traffic Safety Administration (NHTSA), 2013)

---

### THE BAD NEWS

274 toddlers\*/infants\* died. 1 out of 3 were unrestrained (National Highway Traffic Safety Administration (NHTSA), 2013)

73% of child restraints are used incorrectly (National Highway Traffic Safety Administration (NHTSA), 2004)

Type of seat	% misused
Infant seats	84%
Rear-facing convertible	84%
Forward-facing convertible	82%
Forward-facing only	79%

1 out of 5 booster-age children are unrestrained (National Highway Traffic Safety Administration (NHTSA), 2010)

When drivers didn't wear their seat belts, 63% of children up to age 4 were also unrestrained. (National Highway Traffic Safety Administration (NHTSA), 2008)

### THE GOOD NEWS

263 toddlers and infants were saved by restraints. 51 more lives could have been saved if every child was in a child safety seat (National Highway Traffic Safety Administration (NHTSA), 2013)

Child safety seats can reduce fatalities by

- 71 percent for infants (younger than 1 year old)
- 54 percent for toddlers (1 to 4 years old) (National Highway Traffic Safety Administration (NHTSA), 2013)

Belt-positioning booster seats lower the risk of injury to children aged 4-8 years by 45% compared with the use of seat belts alone (Arbogast, Jermakian, Kallan, & Durbin, 2009)

When drivers did wear their seat belts, 75% of children up to age 4 were properly restrained. (National Highway Traffic Safety Administration (NHTSA), 2008)

---

### ABOUT

\*Children are defined as ≤14, toddlers are defined as between the ages of 1 and 4, and infants are defined as <1 year, unless otherwise specified

**To view the infographic on our website:** <http://www.childrensafetynetwork.org/publications/child-passenger-safety-infographic>

**For prevention strategies & resources:** <http://childrensafetynetwork.org/publications/child-passenger-safety-resource-guide>

**To find a car seat inspection station near you:** <http://www.nhtsa.gov/cps/cpsfitting/index.cfm>

---

### SOURCES

Arbogast, K. B., Jermakian, J. S., Kallan, M. J., & Durbin, D. R. (2009). Effectiveness of belt positioning booster seats: an updated assessment. *Pediatrics*, 124, 1281–1286.

Child Car Safety and National Highway Traffic Safety Administration (NHTSA). (2013). Additional Statistics - Child Passenger Safety Week 2013. Retrieved from

<http://www.trafficsafetymarketing.gov/CAMPAIGNS/Child+Safety/Child+Passenger+Safety+Week+2013/2013+Additional+Statistics>

Children's Safety Network (CSN). (2013). United States 2013 Fact Sheet. Retrieved from <http://www.childrenssafetynetwork.org/state/united-states>

National Highway Traffic Safety Administration (NHTSA). (2004). *Misuse of Child Restraints*. Retrieved from [http://www.nhtsa.gov/people/injury/research/tsf\\_misusechildrestraints/images/809851.pdf](http://www.nhtsa.gov/people/injury/research/tsf_misusechildrestraints/images/809851.pdf)

National Highway Traffic Safety Administration (NHTSA). (2008). *FACTS: Children, Youth, Young Adults*. Retrieved from [http://www.nhtsa.gov/DOT/NHTSA/Traffic Injury Control/Articles/Associated Files/810654.pdf](http://www.nhtsa.gov/DOT/NHTSA/Traffic+Injury+Control/Articles/Associated+Files/810654.pdf)

National Highway Traffic Safety Administration (NHTSA). (2010). *Reducing Nonuse of Restraints by Children Ages 5 to 7*. Retrieved from [http://www.nhtsa.gov/staticfiles/traffic\\_tech/tt382.pdf](http://www.nhtsa.gov/staticfiles/traffic_tech/tt382.pdf)

National Highway Traffic Safety Administration (NHTSA). (2013). *2011 Children Traffic Safety Fact Sheet*. Retrieved from <http://www-nrd.nhtsa.dot.gov/Pubs/811767.pdf>