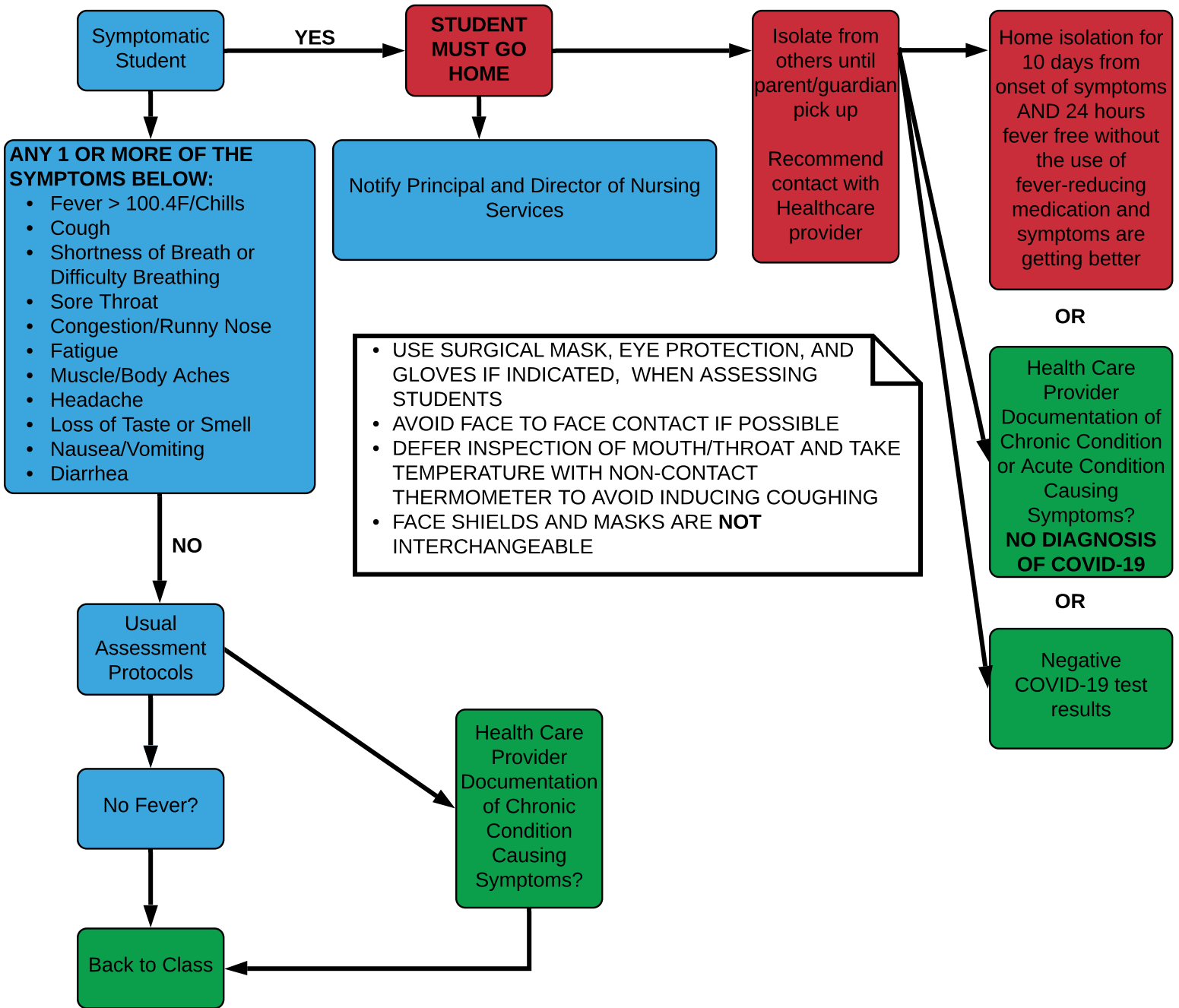


NURSING SERVICES PROTOCOL FOR MANAGING SICK STUDENTS



- USE SURGICAL MASK, EYE PROTECTION, AND GLOVES IF INDICATED, WHEN ASSESSING STUDENTS
- AVOID FACE TO FACE CONTACT IF POSSIBLE
- DEFER INSPECTION OF MOUTH/THROAT AND TAKE TEMPERATURE WITH NON-CONTACT THERMOMETER TO AVOID INDUCING COUGHING
- FACE SHIELDS AND MASKS ARE **NOT** INTERCHANGEABLE

- ISOLATION ROOM MUST BE CLEANED/DISINFECTED AFTER EACH STUDENT LEAVES
- HEALTH OFFICE FLAT CONTACT/HIGH TOUCH SURFACES AND EQUIPMENT USED MUST BE CLEANED/DISINFECTED AFTER EACH STUDENT ENCOUNTER
- DOCUMENT ALL STUDENT ENCOUNTERS IN CAREDOX
 - USE **COVID-SUSPECTED** FOR REASON FOR VISIT **AND** ADD SPECIFIC SYMPTOMS THE STUDENT IS PRESENTING WITH THAT MAKE YOU SUSPECT COVID (COVID SUSPECTED, COUGH, CONGESTION, RASH, ETC.)