

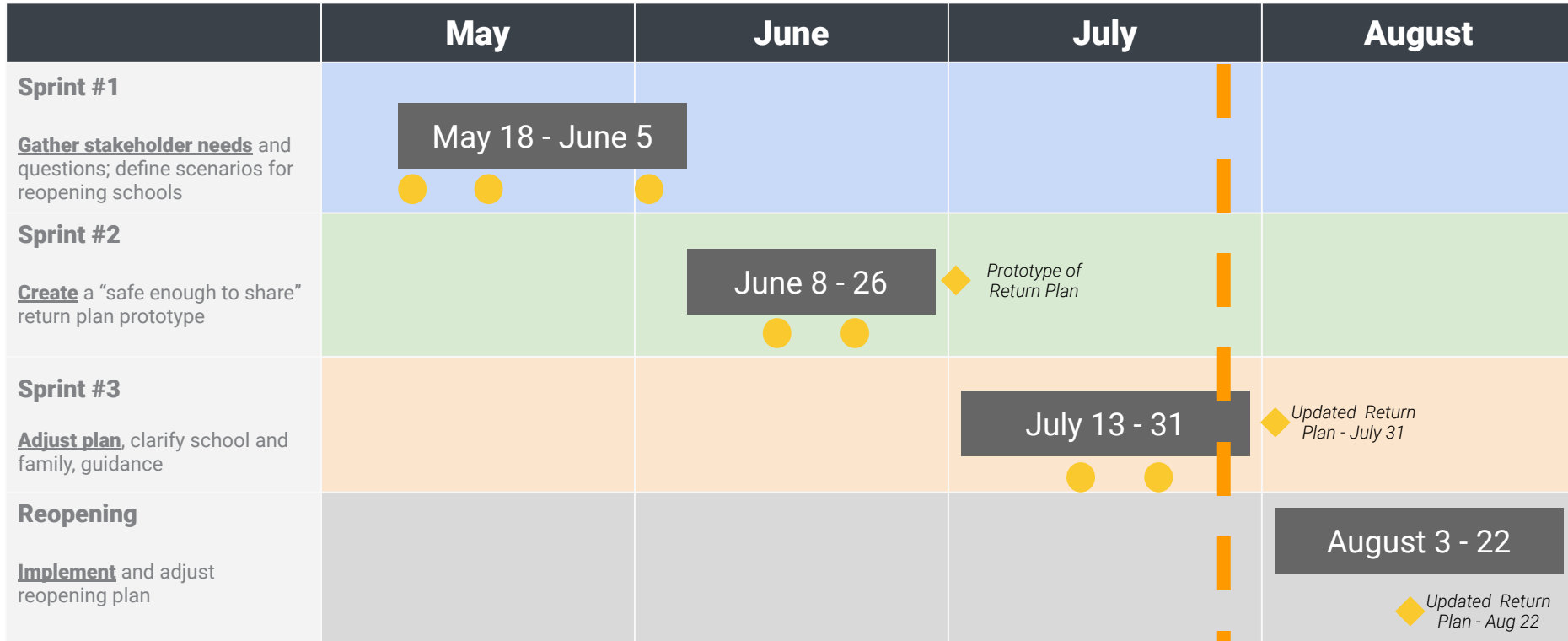


Fairbanks Smart Start

School Board Update

July 27, 2020

Progress Made Since 7/1/20



 Stakeholder Meeting or Opportunity for Input

 Return Plan Draft

We Are Here

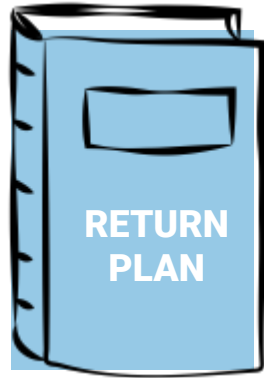


Sprint #3 Deliverables



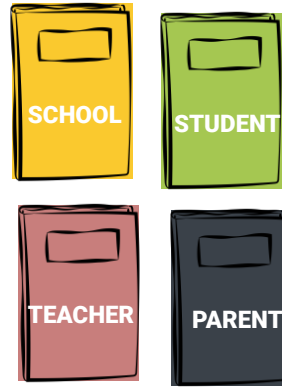
Complete all critical actions in [work plan](#)

Audience: District Admin/Design Council
Purpose: Organize key actions, inform return plan guidance



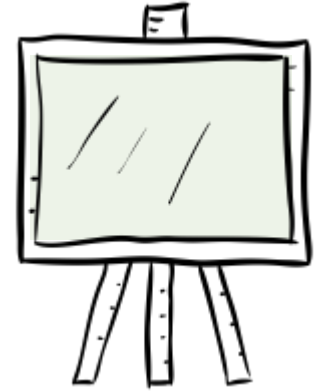
Create updated version of [return plan](#) - 7/31; updates through August

Audience: District Admin/Design Council
Purpose: Hold everything; comprehensive source for guidance



Translate return plan guidance into [school](#), [educator](#), [parent](#), and [student](#) playbooks/day in the life guides

Audience: School leaders, parents, teachers, students
Purpose: Most important info from Return Plan + how-to



Build + implement [training plan](#) – including owners, goals, and dates

Audience: Multiple stakeholder groups
Purpose: Translate guidance into useable info/purposeful action

Stakeholder Training and Support

- A variety of trainings have been created for stakeholders in the district to understand the new systems, structures, and protocols for new operating procedures
- Specific training cadences have been established for students, families, teachers, specialized staff, principals, program directors, custodians, nutrition services, and ADC staff
- Will take place between August 3rd - August 21st

Health and Safety	What precautions are being taken to ensure the health and safety for various stakeholder groups in the district?
Social Emotional Learning	How can we best support the emotional wellbeing of students, families, and staff as we navigate the future of school amidst a global pandemic?
Learning Models	What will teaching and learning look like when we go back to school?



Fairbanks North Star Borough School District Risk Level Decision Matrix

The following matrix outlines FNSBSD's decision-making process and considerations for determining the district's risk level for conducting in-person school. This process is directly informed by the [State of Alaska Department of Health and Social Services](#).

The district will monitor the community COVID data on a daily basis and make decisions in cooperation with local medical advisors.

State of Alaska Alert Level	Average Daily Incidence Over the Last 14 Days	Interpretation	FNSBSD Level	Decision Considerations
High	>10 Cases per 100,000 population	Widespread community transmission with many undetected cases and frequent discrete outbreaks	High	More than 10 new cases over 14-day average
Intermediate	5-10 Cases per 100,000 population	Moderate community transmission with some undetected cases and infrequent discrete outbreaks	Medium-High	<ul style="list-style-type: none"> 14-day average of new case numbers High number of student and staff absenteeism due to illness Ability to have adequate staffing for a safe environment Need for additional physical distancing space for students and staff Isolated "hot spots" within the Borough Other pertinent info from State, Community, and health officials
Low	Less than 5 Cases per 100,000 population	Minimal community transmission	Medium-Low	<ul style="list-style-type: none"> 14-day average of new case numbers Ability to have adequate staffing for a safe environment No isolated "hot spots" within the Borough Other pertinent info from State, community and health officials
			Low	Less than 5 new cases over a 14-day average

*The levels are based on per capita incidence. Specifically, DHHS calculates the number of new cases of COVID-19 per 100,000 residents per day averaged over the past 14 days in each region.

School Options for Families

In-School Blended Learning	eLearning	Homeschool Through Fairbanks BEST
<ul style="list-style-type: none">● Students are enrolled in and attend their school in-person according to district schedules and guidelines (Elementary = 5 days/week; MS + HS = 2 days/week)● Students divided into learning pods to lessen number of students in classrooms● Teachers integrate technology in in-person instruction to ease transition to remote learning if needed (blended learning)● Transportation and meals provided	<ul style="list-style-type: none">● Students are enrolled in their regular school and receive remote instruction from a FNSBSD teacher● eLearning teacher provides online instruction and assignments for students● Students will still have access to support services and extracurricular activities hosted by their school● Zone-agnostic● Meals available for pickup at various locations	<ul style="list-style-type: none">● Students withdraw from their school and register with the Fairbanks BEST School● Parents/caregivers will be responsible for delivering instruction and assessment, with guidance from Fairbanks BEST specialist● Zone-agnostic

Playbooks to guide principal's in planning for reopening

	Operations	Social Emotional Learning	Teaching and Learning	Staff and Parent Support
Operations: <u>Temperature Checks</u> How will temperatures be checked?	Green/Yellow Scenario - In School w/Social Distancing		Red Scenario - Distance Learning	
	District Guidance: "When is too Sick to go to School" infographic (DRAFT)		District Guidance: N/A	
	School Decisions:		School Decisions:	
Operations: <u>Signage</u> Where will signs be placed to ensure staff and student safety?	Green/Yellow Scenario - In School w/Social Distancing		Red Scenario - Distance Learning	
	District Guidance: List of Signage to be Developed (DRAFT)		District Guidance: List of Signage to be Developed	
	School Decisions:		School Decisions:	
Operations: <u>Movement</u> How will students and staff move	Green/Yellow Scenario - In School w/Social Distancing		Red Scenario - Distance Learning	
	District Guidance: Facility Use Checklist (DRAFT)		District Guidance: Facility Use Checklist	
	School Decisions:		School Decisions:	

Assistant Superintendents will use the playbook to pick up on district guidance facilitate reopening planning sessions with principals.

Sample Elementary Schedule

START	Monday	Tuesday	Wednesday	Thursday	Friday
7:30-8:00	<i>Teacher Prep</i>	<i>Teacher Prep</i>	<i>Teacher Prep</i>	<i>Teacher Prep</i>	<i>Teacher Prep</i>
8:00 - 8:10	Student Arrival: Staff assists with students' arrival at school.				
8:10-8:30					
8:30-9:00					
9:00-9:30					
9:30-10:00					
10:00-10:30					
10:30-11:00	Lunch	Lunch	Lunch	Lunch	Lunch
11:00-11:30	Lunch	Lunch	Lunch	Lunch	Lunch
11:30-12:00					
12:00-12:30					
12:30-1:10					
1:10-1:20	Dismissal: Staff assists with students' dismissal from school.				
1:20 -1:30	Prep	Prep	Prep	Prep	Prep
1:30 -2:00	Prep	Prep	Staff Meeting	Prep	Prep
2:00-2:30	Prep	Prep		Prep	Prep
2:30 -3:00	SST	Common Planning Time	Staff Meeting	IEP	Prep
3:00-3:30		PLC's *			

Sample Middle School Schedule

	Monday	Tuesday	Wednesday	Thursday	Friday
30 min block	<i>Teacher Planning</i>	<i>Teacher Planning</i>	<i>Teacher Planning</i>	<i>Teacher Planning</i>	<i>Teacher Planning</i>
~15 min	<i>Students Arrive</i>	<i>Students Arrive</i>	<i>Students Arrive</i>	<i>Students Arrive</i>	<i>Students Arrive</i>
50 min block	1A	1B	1A	1B	1A&B Alternating
	Passing Period				
50 min block	2A	2B	2A	2B	2A&B Alternating
	Passing Period				
50 min block	3A	3B	3A	3B	3A&B Alternating
50 min block	Lunch	Lunch	Lunch	Lunch	Lunch
	Passing Period				
50 min block	4A	4B	4A	4B	4A&B Alternating
	Passing Period				
50 min block	5A	5B	5A	5B	5A&B Alternating
~15 min	Students Check Out				
60 min block	Teacher Planning / Collaboration Time				

Sample High School Schedule

	Monday	Tuesday	Wednesday	Thursday	Friday
Times	A Group	B Group	A Group	B Group	A/B Group: Rotating weeks
7:45-8:45	Teacher Prep				
8:45 - 9:15	Student Check in Time / Breakfast				
9:15 - 10:35	Block 1 A	Block 1 B	Block 1 A	Block 1 B	Block 1 A OR B (See calendar)
10:45 - 12:05	Block 2 A	Block 2 B	Block 2 A	Block 2 B	Block 2 A OR B (See calendar)
12:10 - 12:40	Lunch (1st Floor) / Student Support Period (2nd Floor)	Lunch (1st Floor) / Student Support Period (2nd Floor)	Lunch (1st Floor) / Student Support Period (2nd Floor)	Lunch (1st Floor) / Student Support Period (2nd Floor)	Lunch (1st Floor) / Student Support Period (2nd Floor)
12:45 - 1:15	Lunch (2nd Floor) / Student Support Period (1st Floor)	Lunch (2nd Floor) / Student Support Period (1st Floor)	Lunch (2nd Floor) / Student Support Period (1st Floor)	Lunch (2nd Floor) / Student Support Period (1st Floor)	Lunch (2nd Floor) / Student Support Period (1st Floor)
1:25-2:45	Block 3 A	Block 3 B	Block 3 A	Block 3 B	Block 3 A OR B (See calendar)
2:45 - 3:15	Student Check Out Time				