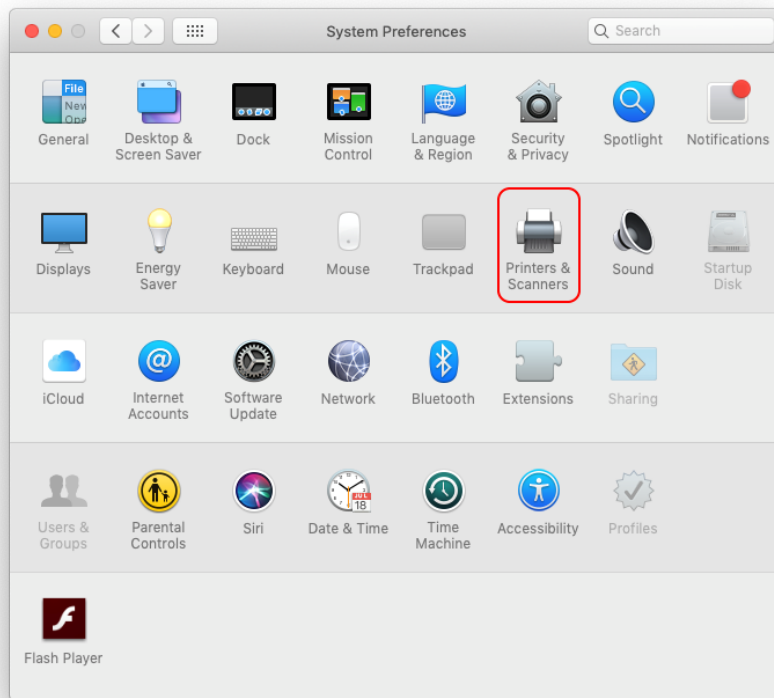
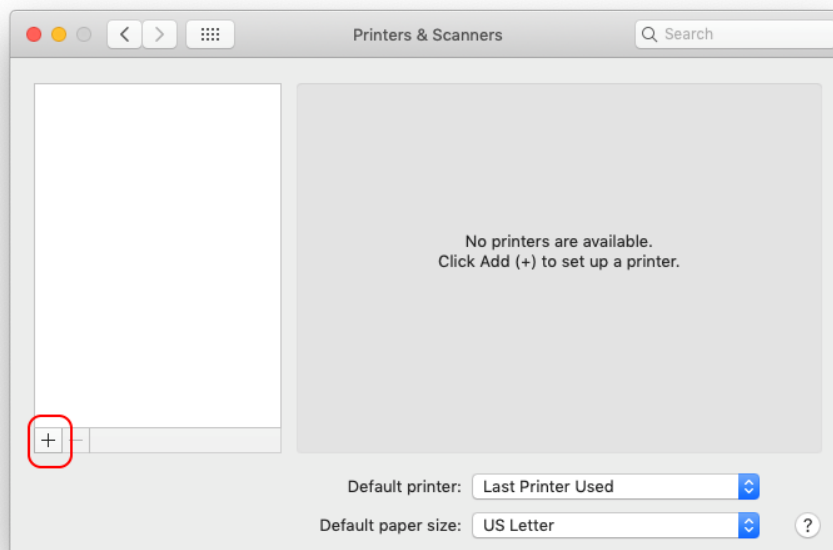


How to add a printer to macOS

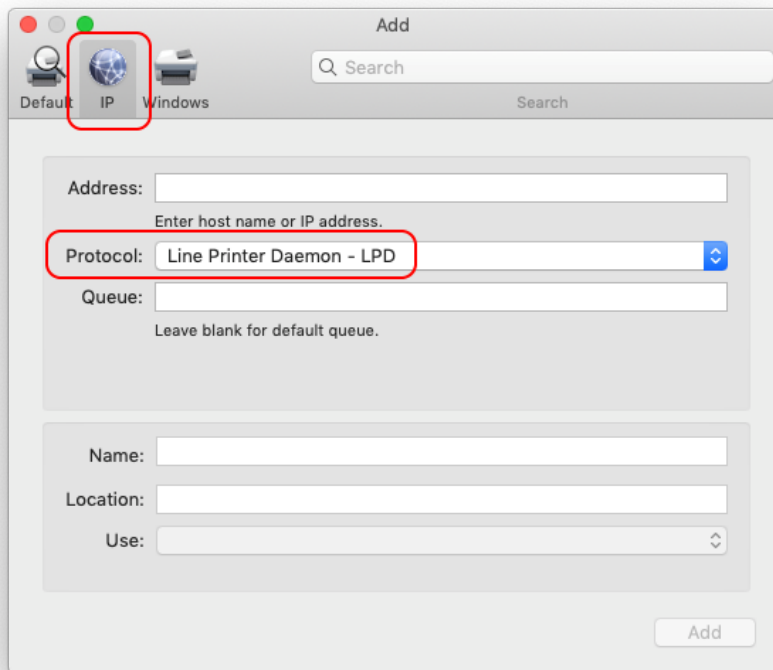
Open System Preferences and click Printers & Scanners



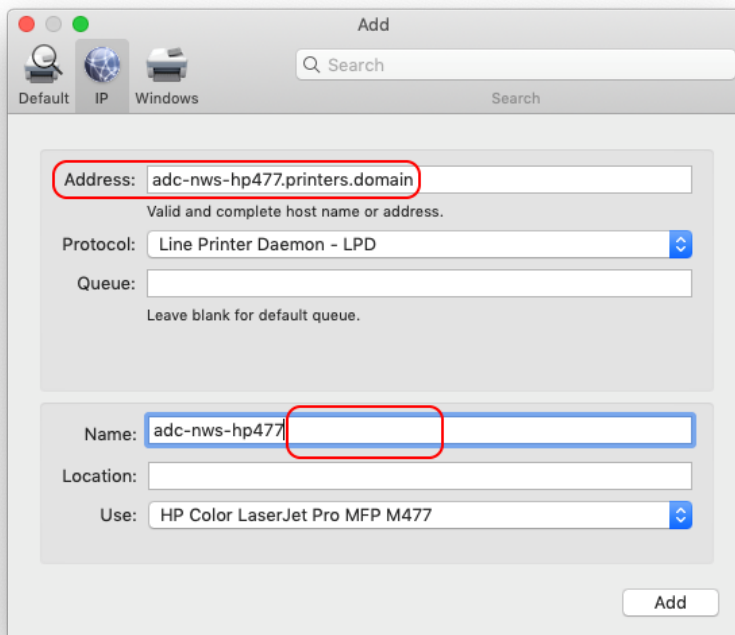
Click the **plus** in the lower left corner



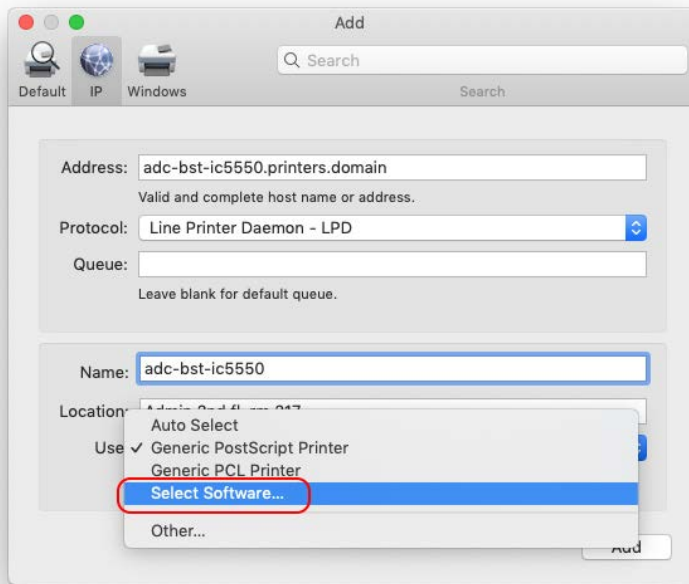
Click the **IP tab** and select **Line Printer Daemon – LPD** in the Protocol field



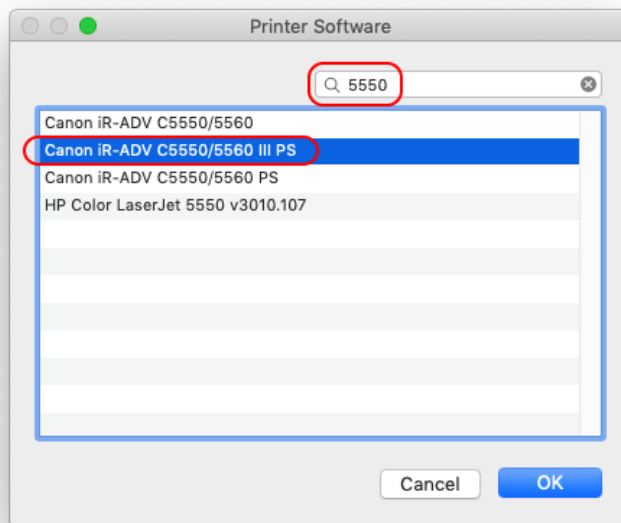
Type in the full address of the printer, complete with .printers.domain
You may modify the name of the printer to make it look nicer



If you're adding a Canon copier, in the **Use** field click **Select Software**



Search for the model number of the copier (e.g., 5550), select the driver, and click **OK**



Click **Add** and you're done.

If you have any issues, please contact the help desk at extension 11397