

Fix Projector Problems

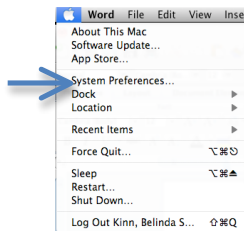


Symptom1: - A blue screen is projected

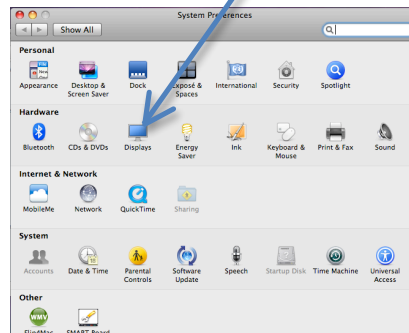
Problem: Your computer does not recognize the projector

Solution: Turn on Detect Displays

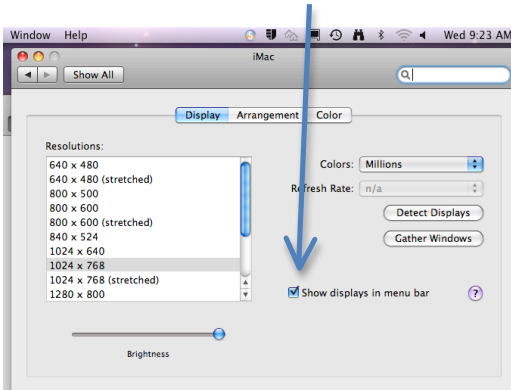
1. Go to *System Preferences*



2. Go to *Displays*

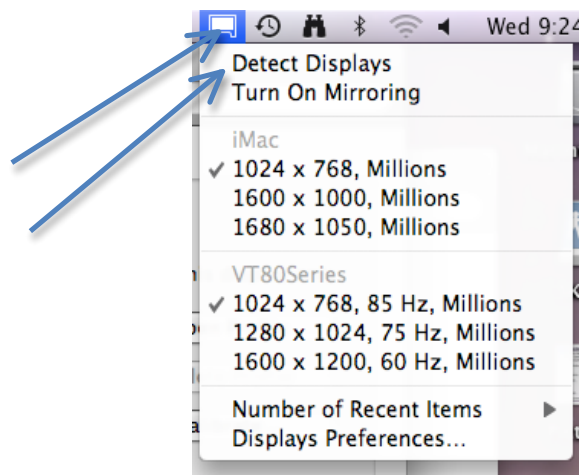


3. Click on *Show Displays* in Menu Bar



4. Go up to your menu bar and click on the display icon

5. Click on *Detect Displays*

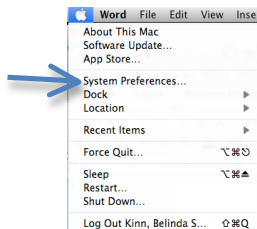


Symptom 2: Projected image doesn't match my computer image

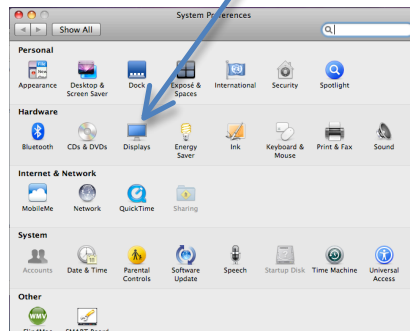
Problem: Mirroring is turned off

Solution: Turn on Mirroring

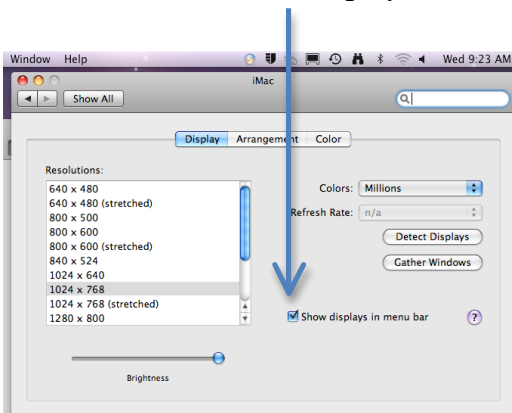
1. Go to *System Preferences*



2. Go to *Displays*

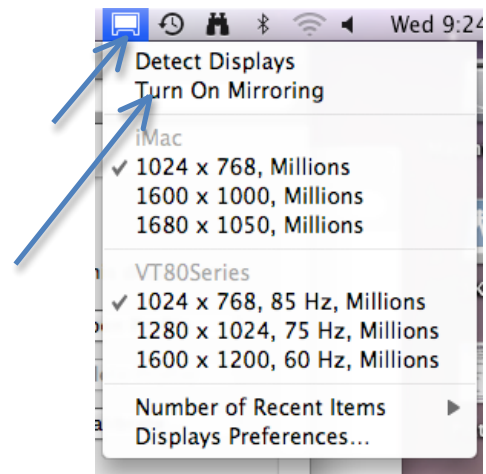


3. Click on *Show Displays* in Menu Bar



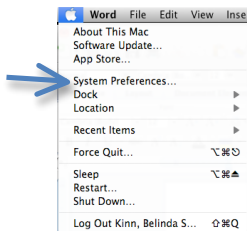
4. Go up to your menu bar. Click on the display icon

5. Click on *Turn on Mirroring*

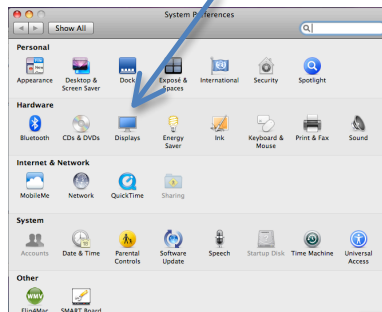


Sympton 3: - Projector projects neon colors
Problem: Your color balance is not set correctly
Solution: Change your color preferences

1. Go to *System Preferences*

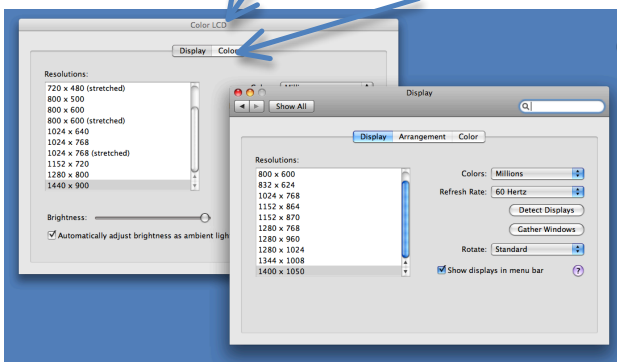


2. Go to *Displays*

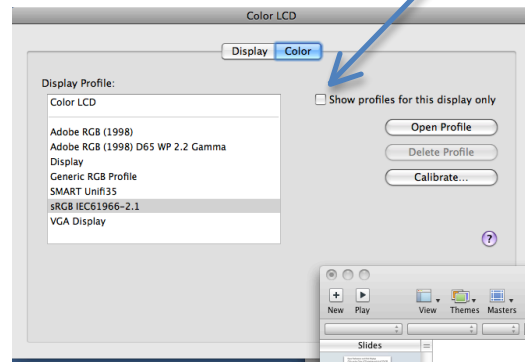


3. Click on the *Color LCD* window

4. Click the *Color* tab



5. Make sure that the *Show Profiles for this display only* is NOT selected

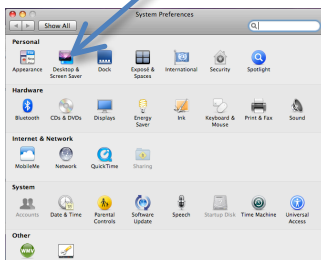


6. Click the *SRGB* profile (Think, “Stupid red, green, blue”)

7. Follow the same steps for the *Display* window.

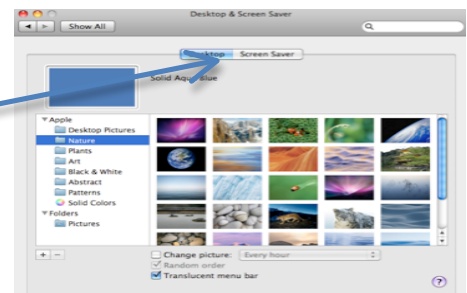
If the color is not automatically fixed, you may have to change your screen saver and then change it back to your original choice.

1. Click on *Desktop and Screen Saver*



2. Click the *Desktop* tab

3. Click on any other picture
 Your screen should look correct now



4. Click back to your original desktop picture