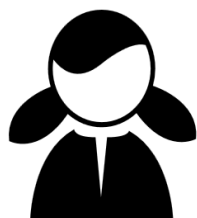


WHO ARE ALASKA'S CTE STUDENTS?

2021-2022 STATEWIDE AVERAGES



43%

Of CTE participants are female

34% Are economically disadvantaged

32% Are NTO*

11% Are in disabled

9% Are migrant

7.4% Are English Learners

* Nontraditional Occupations

DEMOGRAPHICS



👤 Caucasian— 52%;
 👤 Alaska Native—17%;
 👤 Two or more races—13%;
 👤 Hispanic—7.4%;
 👤 Asian—6.4%;
 👤 Pacific Islander—2.3%;
 👤 Black—2.1%;

CTE IN ALASKA



98% GRADUATION

4-year cohort CTE concentrators[‡] are 30% more likely to graduate than non-CTE students.

[‡] Students with ≥ 2.0 HS CTE credits



43%

Alaskan graduates are CTE concentrators



30%

Of students took at least one CTE class in high school

74%

Of CTE concentrators go on to postsecondary, adv. training, the military, or employment.

	2017	2018	2019	2020	2021	2022	5 year trend
Female participants	42.56%	42.77%	43.02%		41.22%	42.88%	↘
Economically disadvantaged	40.20%	40.74%	40.57%		33.88%	34.37%	↗
NTO	29.46%	31.89%	30.72%		34.15%	31.99%	↑
ELL & Migrant	13.37%	14.06%	15.15%		16.79%	16.42%	↗
Disabled	13.98%	13.96%	13.80%		12.11%	11.30%	↗
	2017	2018	2019	2020	2021	2022	5 year trend
Caucasian	54.19%	54.69%	55.34%		53.59%	52.34%	→
Alaska Native	16.09%	15.00%	14.88%		16.56%	16.69%	→
Asian	7.23%	7.60%	7.22%		6.00%	6.43%	→
Multiracial	9.49%	9.21%	9.64%		12.22%	12.72%	→
Hispanic	6.51%	6.84%	6.38%		7.15%	7.43%	→
Black	3.07%	3.13%	2.80%		1.99%	2.12%	→
Pacific Islander	2.05%	2.22%	2.60%		2.49%	2.27%	→
	2017	2018	2019	2020	2021	2022	5 year trend
CTE Concentrator graduation rate	95.44%	94.43%	94.79%		96.91%	97.72%	→
CTE Participants	31.70%	33.56%	30.08%		20.57%	30.33%	↘
% of AK grads who are CTE Concentrators	18.47%	17.38%	17.50%		25.93%	42.75%	↗
Placement rate	79.00%	69.45%	72.69%		67.62%	73.80%	↘